

**NORTHWEST  
FLORIDA FAIR  
2009**



**NOVEMBER 3- NOVEMBER 8, 2009  
FORT WALTON BEACH FAIRGROUNDS**



## NORTHWEST FLORIDA FAIR 4-H DIVISION



4-H is an opportunity for boys, girls, parents, grandparents, friends and neighbors to become involved as volunteers to influence the development of youth.

4-H is small town, downtown and uptown; in high rises and suburbs; in the country and on the farm. 4-H members, parents and leaders have fun as they learn and work together in the home, family, neighborhood and community.

People in 4-H operate like a team with common goals and an interest in helping one another. Parents, relatives, neighbors and others provide leadership to 4-H'ers by:

- Assisting them in deciding what they want to learn and do
- Guiding them in deciding what help is needed
- Helping them learn skills to accomplish their goals
- Assisting them in assessing progress toward meeting their goals

4-H members, parents and leaders participate in projects, activities, events and meetings. They learn skills that help them get along better in their families, the community and the world or work.

People interested in 4-H usually form a club. The 4-H Club is one of the major methods of involving people in the 4-H program. It serves as the center of activity which generates enthusiasm for participation in 4-H outside the club. And more importantly, it serves as a center where youth can find the caring and support they need to learn skills they will use throughout their lives.

4-H Clubs are organized and conducted by the members, parents and volunteer leaders who choose to belong. The major method used to organize and conduct the club is the group meetings - members can participate in the planning and carrying out of the 4-H club projects, activities and events. In turn, they will... \*Learn to make decisions \* Develop skills in group discussions \* Try new ideas and methods \* Develop citizenship and leadership skills \* Acquire new knowledge and skills \* Develop confidence in themselves \* Gain a sense of group pride and \* Form a cooperative attitude.

**For more information about the 4-H Program in Okaloosa County contact Jennifer Heady, 4-H Program Coordinator, at (850) 689-5850 or 729-1400 ext. 5850, or email Jennifer at : [jheady@co.okaloosa.fl.us](mailto:jheady@co.okaloosa.fl.us)**



The Institute of Food and Agricultural Sciences (IFAS) is an Equal Opportunity Institution authorized to provide research, educational information and other services only to individuals and institutions that function with non-discrimination with respect to race, creed, color, religion, age, disability, sex, sexual orientation, marital status, national origin, political opinions or affiliations. U.S. Department of Agriculture, Cooperative Extension Program, and Boards of County Commissioners cooperating. Larry Arrington, Dean.



## YOUTH ACTIVITIES

(Under the Direction of Jennifer Heady, Okaloosa County 4-H Program Coordinator)

1. AGE REQUIREMENTS –  
Clover Bud Division – Must have reached their 5<sup>th</sup> birthday before September 1, 2009 and have not passed their 8<sup>th</sup> birthday by September 1, 2009.  
Junior Division - Must be 8 by September 1, 2009 and have not passed their 11<sup>th</sup> birthday by September 1, 2009.  
Intermediate Division – Must be 11 by September 1, 2009 and have not passed their 14<sup>th</sup> birthday by September 1, 2009.  
Senior Division - Must be 14 by September 1, 2009 and have not passed their 19<sup>th</sup> birthday or graduated from high school.
2. PRE-REGISTRATION - is required and should be turned into the County 4-H Office by October 16, 2009. NO ADDITIONS OR ALTERATIONS OF ENTRIES WILL BE ACCEPTED AFTER THE REGISTRATION DEADLINE.
3. REGISTRATION and JUDGING will be by number.
4. ARTICLES ENTERED must follow guidelines established. Items must have been made by youth in last year (since November 2008).
5. REMOVAL OF 4-H LIVESTOCK SHOW EXHIBITS MUST BE APPROVED BY THE 4-H AGENT OR FAIR REPRESENTATIVE. Removal of exhibits without approval may cause forfeiture of premium money, and/or other awards.
6. REMOVAL OF ITEMS FROM FAIR shall be done Monday, November 9, 2009 – Removal of items before this time will cause forfeiture of premium money and/or other awards.
7. ALL REASONABLE CARE will be taken of exhibits; however the Okaloosa County Cooperative Extension Service or the Fair Association are NOT liable for damage, breakage, theft, etc.
8. UNSUITABLE EXHIBITS or exhibits of poor quality may be refused.

## TIME SCHEDULE

**Friday, October 16** - Pre-registration for all your entries due (4-H Fair Entries, Okaloosa Extension Service, 5479 Old Bethel Rd., Crestview, FL 32536-5512). Entry forms are included with this book, in the September 4-H Newsletter or are available at the Okaloosa Extension Service Office and Fairgrounds Office.

**Monday, November 2, 4:00-8:00 P.M.** - All items to be judged must be brought to the Fairgrounds Extension Building. Be sure entry is officially checked in and recorded. DO NOT just set them down and leave, they may get overlooked or lost.

**Tuesday, November 3** – After lunch ~ 1:30 p.m. JUDGING; 5:00 p.m. FAIR OPENS

**Tuesday, November 3** – Open Youth Lamb Show 6:00 p.m. and Market Meat Goat Show, follows Lamb Show

**Wednesday, November 4** – Open Youth Dairy Goat, 6:00 p.m.

**Thursday, November 5** - 4-H Dog Show and Costume Contest, 6:30 p.m.

**Saturday, November 7** – Open Breeding Beef Show, 2:00 p.m.

**Saturday, November 7** – Open Model Horse Show, 3:30 p.m.

**Sunday, November 8, after 10:00 p.m. – Monday, November 9, 9:00 a.m.-4:00 p.m.** – Remove livestock from Fairgrounds.

**Monday-Wednesday, November 9-November 11, 9:00- 4:00 p.m.**

Remove exhibits from Fairgrounds.

## **4-H CLUB DEPARTMENT**

### **PROJECT EXHIBITS**

This department is open to all bonafide Okaloosa County 4-H members. Each 4-H member may enter up to 3 exhibits in each project area he/she is interested in. Items must have been made by 4-H'ers in the past year (since November 1, 2008).

Pre-registration is required and should be submitted by October 16 to the 4-H Office. Registration forms are available at the 4-H Office or Fair Office. No additions or alterations of entries will be accepted after the registration deadline. A 4-H project exhibit can be one or more items made in a 4-H project. It can also be a tabletop exhibit consisting of poster, handouts, etc. to depict what a 4-H'er is doing in a project. Project areas are listed below. 4-H'ers are encouraged to develop individual ideas for project exhibits, using the project book as a guide.

### **4-H PROJECT EXHIBIT**

**PROJECT EXHIBITS MUST BE NO LARGER THAN 18" WIDE BY 18" TALL BY 18" DEEP. EXHIBITS THAT DO NOT FOLLOW SIZE LIMITATIONS WILL BE REFUSED. POSTERS ALONE ARE NOT CONSIDERED AN EXHIBIT.**

All judging will be done by the Danish System. Each project display will be presented a ribbon and premium. There will be Special Merit Awards for 4-H exhibits that demonstrate especially outstanding efforts and excellent quality. However, no more than **3** of these awards will be available. Decisions of the judges will be final.

### **SCORECARD**

1. Quality of workmanship and appearance of finished project display; proper size - 40 points
2. Neatness - 15 points
3. Draws emphasis to what has been learned in project, i.e. clothing construction... submit a garment appropriate for project level skills - 20 points
4. Appropriateness of display in relation to project area, i.e. a box of mounted seashells for Marine Science is inappropriate until they are properly categorized, labeled and shown according to the project manual - 25 points

**TOTAL - 100 Points**

### **4-H PROJECT PREMIUMS**

BLUE RIBBON	\$ 6.00
RED RIBBON	\$ 4.00
WHITE RIBBON	\$ 3.00
HONORABLE MENTION	\$ 2.00
SPECIAL MERIT AWARD	\$ 8.00



## CATEGORIES - 4-H EXHIBITS

1. Aquatic and Marine Environment - no live exhibit
2. Career Exploration, Citizenship and Leadership
3. Clothing
4. Companion Animal - no live exhibits
5. Consumer Education, Family Economics and Home Management
6. Earth Connections
  - A. Includes exhibits on interdependence of air, earth, soil and water; natural resources conservation and quality, soil science, geology, weather, atmosphere and the stars
7. Energy
8. Food and Nutrition (General)
  - A. Must not require refrigeration
  - B. Recipe must be included on 3" X 5" card
  - C. Foods will be judged on appearance, texture, flavor
  - D. Must be entered on disposable containers
  - E. Quantity required: ½ cake, ½ pie, 1 doz. cookies, ½ loaf bread, ½ doz. biscuits, ½ doz. muffins
  - F. Food of any type may be entered but no highly perishable food will be accepted
  - G. No commercially prepared mixes may be used (Exception – Quick Breads)
9. Food Science and Safety
  - A. Includes exhibits regarding food safety topics and food science, such as vacuum packaging, food irradiation, pesticides, food additives and biotechnology in foods
  - B. Food Preservation Exhibit
    - 1) Must be packaged in standard canning jars
    - 2) No rings should be left on jars
    - 3) Recipe procedure must be included on 3" X 5" card
    - 4) Jar must be labeled with contents
    - 5) Pickles, preserves, jams, jellies, fruits, vegetables and meats may be entered
10. Forests and Other Terrestrial Environments
  - A. Includes exhibits on forest ecosystems, forest conservation, wildlife management, entomology and beekeeping
  - B. No live exhibits
11. General Animal Science - no live exhibits
12. General Category
  - A. Includes all exhibits **not** related to other categories listed
13. Health
14. Horse
15. Housing and Home Environment
16. Human Development
17. Leisure Arts/Recreation
  - A. Includes all exhibits on leisure activities and recreation, including, shooting sports, areas of archery and riflery, music, arts & crafts, cake decorating, floral arranging, wood-working, and metal crafts
18. Mechanical and Electronic Science
19. Media Arts
  - A. Includes exhibits on all phases of photography, graphic arts, computer graphics, CAD, video or other current technologies used for communication media

20. Petroleum Power and Small Engines

21. Plant Connections

- A. Includes all exhibits relating to production and marketing of fruits, vegetables, flowers, turf, ornamental, field crops and forage. landscaping, green houses, propagation soils, hanging baskets, bulbs, citrus and harvesting or processing crops
- B. Gardening Project
  - 1) Harvested fruits and vegetables
  - 2) Each entry is to be composed of several items arranged in an attractive display; unusual or large specimens may be entered singly
- C. Ornamental Project
  - 1) Specimens must be owned by member and been in his/her possession for at least three months
  - 2) Plants and flowers must be labeled with common and botanical name
  - 3) All plants must be in good condition. Containers should be covered for attractive display
  - 4) Exhibitors must leave written instructions with event chairman concerning special care of their exhibit

22. Safety

23. Veterinary Science

24. Waste Management

- A. Includes exhibits relating to the management of solid and hazardous waste such as reducing, reusing, recycling, litter control and composting as a recycling/waste management process

25. Photo Scrap booking

- A. Youth can exhibit up to six (6) scrap booking pages as one (1) exhibit

### **4-H CLUB BOOTHS**

The purpose of the club booths is to depict a part of 4-H to non-4-H'ers and to the general public. **It must be in place and complete by Monday, November 2, 2009, at 8:00 p.m.**

Each club will receive \$100.00 to help offset costs of exhibits.

**THEME:** Each club will select a theme for its booth. This must be submitted along with a sketched plan to the 4-H Office by October 16, 2009.

**SIZE:** The 4-H booth will be approximately 10' wide and 8' deep with a partial divider between booths. **Each of the booth's dimensions varies, and measuring is recommended.**

### **PREMIUMS**

- 1<sup>st</sup> Place - \$50.00 - Blue Rosette
- 2<sup>nd</sup> Place - \$40.00 - Red Rosette
- 3<sup>rd</sup> Place - \$30.00 - White Rosette
- 4<sup>th</sup> Place - \$20.00 - Honorable Mention

### **SCORECARD**

- 1. Uses effective caption on title sign - short, catchy, appropriate, well placed - 10 points

2. Draws attention, causes people to stop - 15 points
3. Arouses and holds interest, makes people stop long enough to read & study essentials of materials - 20 points
4. Has much educational value. Presents facts worth knowing and using in a way easy to remember - 25 points
5. Has pleasing appearance. Booth appropriately, conservatively and neatly decorated – 20 points
6. Uses explanatory material effectively - 10 points

**TOTAL.....100 POINTS**

### **GENERAL REQUIREMENTS AND LIMITATIONS FOR LIVESTOCK EXHIBITS**

1. Official Certificate of Veterinary Inspection (OCVI) Required. All Animals for exhibition in Florida, unless specifically exempted, must be accompanied by an OCVI issued by a veterinarian accredited in the state of origin.
  - a. The OCVI must be complete including the breed, name and registration number, and permanent identification such as tattoo, ear tag number, microchip number, or brand.
  - b. Results of a specific test requirement or herd certification or validation number for each animal must be recorded on the OCVI with the date of the test or herd certification or validation.
2. For exhibition purposes only, an OCVI is valid for 90 days from the date of issue; or until the expiration of any required tests, whichever is the earliest date. For importation into the State, the OCVI is valid for 30 days pursuant to paragraph 5C-3.002(1)(c), F.A.C.
3. Exemption to Required OCVI. An OCVI is not required for animals originating in the State of Florida and entered in market classes provided that the animals are segregated from other animals and the pens are occupied only by the animals in a market class. Pens used for market classes must not be reused until after cleaning and disinfecting.
4. Prior to acceptance at an exhibition, all animals presented for exhibition must be visually inspected by a veterinarian licensed in the state of Florida, or by a Department Representative for:
  - a. The required identification of the animal;
  - b. Clinical signs of disease; and
  - c. Evidence of compliance with test requirements.
5. Any animal which has clinical signs of contagious or infectious disease on visual inspection or any animal which is known to be exposed must be:
  - a. Withdrawn from exhibition and returned to the place or origin, or
  - b. Examined at the owner's expense within 24 hours by a veterinarian licensed in the State of Florida who certifies by a signed written statement that the animal is free of contagious or infectious disease.

Specific Authority 585.002(4), 585.08(2)(a), 585.145(1), (2) FS

## **GENERAL RULES AND REGULATIONS FOR LIVESTOCK EXHIBITORS**

All exhibitors are cautioned to read carefully the following rules and regulations, as they will be enforced strictly, with no deviation.

### **Administration of Rules and Regulations**

The Northwest Florida Fair Association and the Okaloosa Extension Service reserve the final and absolute right to interpret these rules and regulations and to arbitrarily settle and determine all matters, questions, and differences in regards thereto, or otherwise arising out of or connected with or incident to the Show, and right to amend or add to these rules as its judgment may determine. An exhibitor who violates any of the following rules will forfeit all privileges and premiums and be subject to such penalty as the Northwest Florida Fair may order.

### **Statement of Liability**

1. All livestock exhibits will be under the direction of the Northwest Florida Fair Association and the Okaloosa Extension Service, but the Northwest Florida Fair Association, University of Florida, Okaloosa Extension Service, its employees and volunteers, and the Okaloosa Board of County Commissioners, will in no case be responsible for any loss or damage that may occur. Each exhibitor will be solely responsible for any consequential or other loss, injury or damage done to, or occasioned by, or arising from, any animal or article exhibited by him/her and for its description as given in the catalog, and shall indemnify the Extension Service, its employees and volunteers, and Okaloosa Board of County Commissioners, against all legal or other proceedings in regard thereto, as well as damage or injury to any other person or property, caused by the exhibitor, or any of the animals exhibited by him/her, or arising out of, or in any way connected with such exhibition of any of the animals so exhibited.
2. The Fair Management and Okaloosa Extension Service reserves the right to remove from the grounds any exhibit, animal, or fowl that may be falsely entered or may be deemed unsuitable or objectionable.
3. Each exhibitor (and exhibitor's parent or legal guardian) must sign the statement acknowledging that he/she understands and will abide by the liability requirements and rules and regulations of the Northwest Florida Fair and Okaloosa Extension Service. If the exhibitor does not sign this statement his/her application for entry will not be accepted.



## OPEN YOUTH RABBIT AND CAVY EXHIBITS

Entry Deadline: October 16, 2009

Arrival Time: Monday, November 2, 4:00-6:00 p.m.

Remove Exhibits: After 10:00 p.m. November 8, or 9:00 a.m.-4:00 p.m.  
November 9, 2009

Entry Fee: None



### RULES AND REGULATIONS:

1. This exhibit is open to youth who have reached their 5<sup>th</sup> birthday by September 1 of the current year and not passed their 19<sup>th</sup> birthday or graduated from high school.
2. Rabbits and cavy must be 8 weeks of age or older, well-groomed and clean.
3. No diseased or parasitic animals will be allowed to enter the show. All animals will be inspected.
4. The Fair will feed and water all animals, but will not be responsible for animals after 4:00 p.m. Monday, November 9, 2009
5. 4-H and FFA members will be given preference on cage space.
6. Maximum of five entries per youth.

### Division A - Rabbit - any breed or sex

Class 1 - Exhibition

Premium Schedule - Exhibitor will receive a \$5.00 premium and rosette for each rabbit exhibited.



### Division B - Cavy - any breed or sex

Class 1 - Exhibition

Premium Schedule - Exhibitor will receive a \$5.00 premium and rosette for each cavy exhibited.

## OPEN YOUTH POULTRY SHOW EXHIBITS

Entry Deadline.....October 16, 2009

Arrival Time & Veterinary Check in.... 4:00-6:00 p.m., Monday, November 2, 2009

Exhibit Judging.....1:30 p.m., November 3, 2009

Removal of Poultry..... After 10:00 p.m. November 8 or 9:00 a.m.-4:00 p.m.,  
November 9, 2009



### PURPOSE

1. To use the poultry project as a tool in the total development of youth in 4-H. This is especially adapted to rural non-farm and urban situations.
2. To provide a learning experience in livestock production.
3. To develop an appreciation of livestock among 4-H youth who may not be able to handle
4. other types of large animal projects.

## RULES AND REGULATIONS

An Official Certificate of Veterinary Inspection is required for all poultry, domestic birds and ratites for movement into Florida and for exhibition at the Northwest Florida Fair. All poultry entered for exhibition must originate from Pullorum-Typhoid clean flocks or hatcheries, as defined in rule 5C-16.008, Florida Administrative Code, or have a negative Pullorum-Typhoid test within 90 days prior to exhibition. However, poultry, domestic birds and ratites may be presented for exhibition without an Official Certification of Veterinary Inspection if inspected as provided in 5C-4.001(4) by a representative from the Florida Department of Agriculture, Division of Animal Industry. A State Veterinarian or representative will be present at the Northwest Florida Fair site to inspect all poultry for disease and test for Pullorum-Typhoid before birds will be caged. Poultry showing any signs of disease, testing positive for Pullorum-Typhoid, or having external parasites will not be accepted for exhibition.

1. Each pair will consist of one male and one female of the same breed or variety.
2. Bring poultry entries to the Livestock Building located behind the main fair buildings. Exhibitors must remain with their birds until veterinary examination has been conducted and birds are accepted for showing.
3. Poultry will remain at the fairgrounds during the duration of the Fair. Poultry can be removed from the fair site Sunday after 10:00 p.m. or Monday, November 9, 2009, 9:00 a.m.-4:00 p.m. Removal prior to that time will cause forfeiture of premium money and/or other awards.
4. Feed and water for the poultry will be provided by the Okaloosa County 4-H Office.
5. All animals must be clean and well groomed.
6. Be sure to bring healthy birds to the fair as they will be examined by the State Veterinarian. Birds with external parasites, displaying runny eyes or noses, sneezing or displaying other indications of illness or disease will not be accepted for showing.
7. All poultry will be tested for negative Pullorum-Typhoid before being caged and accepted for showing.
8. Poultry pairs will be judged by the standard of perfection as described in the "American Poultry Standard of Perfection" guidelines. There will be one Best Poultry Pair In Show awarded, receiving a premium, and trophy.
9. All decisions of the judge(s) will be final.

## EXHIBITION PREMIUMS

Blue Ribbon	\$ 5.00
Red Ribbon	\$ 4.00
White Ribbon	\$ 3.00
Honorable Mention	\$ 2.00
Best Standard Breed	\$10.00 and Rosette
Best Bantam Breed	\$10.00 and Rosette
Best Exotic Breed	\$10.00 and Rosette
Best Game Bird Breed	\$10.00 and Rosette
Best Miscellaneous Breed	\$10.00 and Rosette
Best Poultry Pair In Show Award	\$15.00 and Trophy



## **OPEN MARKET LAMB SHOW**

Entry Deadline.....October 16, 2009

Arrival Time/Weigh in....5:00-6:00 p.m., Tuesday, November 3, 2009

Judging Begins.....6:00 p.m., November 3, 2009

### **PURPOSE**

- A. To use the market lamb project as a tool in the total development of youth in 4-H/FFA/Other Youth Groups. This is especially adapted to rural non-farm and urban situations.
- B. To provide a learning experience in livestock production.
- C. To develop an appreciation of livestock among youth who may not be able to handle other types of large animal projects.

#### **5C-4.005 Goats or Sheep**

(1) OCVI Required.

(a) Florida-origin goats or sheep presented for exhibition must be accompanied by an OCVI dated not more than 90 days prior to presentation.

(b) Goats or sheep imported into Florida for exhibition must be accompanied by an OCVI completed within 30 days prior to exhibition.

(2) Identification. All goats or sheep entered for exhibition purposes must have an official individual identification in accordance with the National Scrapie Eradication Uniform Methods and Rules, APHIS 91-55-066, June 1, 2005.

(3) Test or Certification Required.

(a) Tuberculosis Test. All dairy goats six (6) months of age or older imported for exhibition purposes must originate from an Accredited Tuberculosis-Free Herd, or have had a negative caudal fold tuberculosis test within 90 days prior to exhibition. When originating from accredited tuberculosis-free herds, the OCVI must show, the accredited herd number and the date of the last herd accreditation test.

(b) Brucellosis Test. All dairy goats six (6) months of age or older imported for exhibition purposes must originate from a Certified Brucellosis-Free Herd, or have had a negative brucellosis test within 90 days prior to exhibition. When originating from a certified brucellosis-free herd, the OCVI must show the certified herd number and the date of the last herd certification test.

(c) Exemption From Test Requirements. There are no tuberculosis or brucellosis test requirements for meat type goats or Florida-origin dairy goats

### **RULES AND REGULATIONS**

1. Lambs must be owned/leased and in possession of the youth exhibitor at least 60 days prior to the date of the show.
2. Youth exhibitors must have reached their 8<sup>th</sup> birthday by September 1 of the current year and not passed their 19<sup>th</sup> birthday or graduated from high school. Further, the exhibitor must reside in Florida panhandle and south Alabama Counties.
3. Lambs must not be older than 12 months of age and will still have milk teeth. Lambs must be wethers or open ewe lambs.
4. Market classes will be divided by weight.
5. Lambs will be shown with less than .5 inch of wool.
6. Exhibitor may show up to three lambs in the show. All lambs must be trained for show and controlled by the exhibitor.
7. No entry fee is required.
8. All market lambs entered for exhibition must have an official health certificate, and ID tag or certified marking that they have not been exposed to scrapie.
9. All decisions of the judge(s) will be final.

## SHOWMANSHIP CONTEST

Class 1: 8-10 years

Class 2: 11-13 years

Class 3: 14-18 years

## PREMIUMS

Show premiums and ribbons will be awarded in Classes 1 - 3, as follows:

1 <sup>st</sup> - \$18	4 <sup>th</sup> - \$12	7 <sup>th</sup> - \$6	10 <sup>th</sup> - \$3
2 <sup>nd</sup> - \$16	5 <sup>th</sup> - \$10	8 <sup>th</sup> - \$4	
3 <sup>rd</sup> - \$14	6 <sup>th</sup> - \$8	9 <sup>th</sup> - \$3	

Costume Contest – Premiums and Ribbons awarded. All participants will receive a ribbon.

1 <sup>st</sup> - \$10	2 <sup>nd</sup> - \$5	3 <sup>rd</sup> - \$3
------------------------	-----------------------	-----------------------

Market Classes (6 weight divisions) will be awarded premiums and ribbons.

Additional premium money will be awarded as follows:

Showmanship Champion - \$30 and trophy

Showmanship Reserve Champion - \$20 and trophy

Market Champion - \$30 and trophy

Market Reserve Champion - \$20 and trophy.

## OPEN YOUTH MARKET MEAT GOAT SHOW

Entry Deadline: October 16, 2009

Entry Fee: None

Arrival Time/Weigh in: Tuesday, November 3, 2009, 5:00-6:00 p.m.

Judging Begins: ½ hour after Market Lamb Show

### **5C-4.005 Goats or Sheep**

(1) OCVI Required.

(a) Florida-origin goats or sheep presented for exhibition must be accompanied by an OCVI dated not more than 90 days prior to presentation.

(b) Goats or sheep imported into Florida for exhibition must be accompanied by an OCVI completed within 30 days prior to exhibition.

(2) Identification. All goats or sheep entered for exhibition purposes must have an official individual identification in accordance with the National Scrapie Eradication Uniform Methods and Rules, APHIS 91-55-066, June 1, 2005.

(3) Test or Certification Required.

(a) Tuberculosis Test. All dairy goats six (6) months of age or older imported for exhibition purposes must originate from an Accredited Tuberculosis-Free Herd, or have had a negative caudal fold tuberculosis test within 90 days prior to exhibition. When originating from accredited tuberculosis-free herds, the OCVI must show, the accredited herd number and the date of the last herd accreditation test.

(b) Brucellosis Test. All dairy goats six (6) months of age or older imported for exhibition purposes must originate from a Certified Brucellosis-Free Herd, or have had a negative brucellosis test within 90 days prior to exhibition. When originating from a certified brucellosis-free herd, the OCVI must show the certified herd number and the date of the last herd certification test.

(c) Exemption From Test Requirements. There are no tuberculosis or brucellosis test requirements for meat type goats or Florida-origin dairy goats.

## **Meat Goat Rules and Regulations:**

1. Commercial goats will be weighed and tagged with a show number at 5:00 p.m., November 4, 2009.
2. Youth exhibitors must have reached their 8<sup>th</sup> birthday by September 1 of the current year and not passed their 19<sup>th</sup> birthday or graduated from high school.
3. All goats must be carrying all milk teeth at weigh-in.
4. All goats must be dehorned or have horns tipped.
5. All goats must have I.D. – scrapie tags where applicable.
6. Showmanship goats must be owned by exhibitor for at least 60 days prior to show.
7. NO BUCK GOATS of any age will be accepted.
8. Exhibitors must be clean and neat and dressed in long pants or skirt with a solid white dress shirt or blouse. Closed toe shoes are required.

### **Division C: Youth Meat Goat Showmanship Contest**

Class 1: Juniors 8-10 years

Class 2: Intermediates 11-13 years

Class 3: Seniors 14-18 years

### **Division D: Youth Pet Goat Showmanship Contest**

Class 1: Juniors 8-10 years

Class 2: Intermediates 11-13 years

Class 3: Seniors 14-18 years

### **Premium Schedule**

1<sup>st</sup> - \$18.00

2<sup>nd</sup> - \$15.00

3<sup>rd</sup> - \$13.00

4<sup>th</sup> - \$8.00

5<sup>th</sup> - \$3.00

Grand Champion = \$15.00 and Plaque

Reserve Champion - \$10.00 and Rosette

### **Division E: Commercial Meat Goats**

Class 1 – Weight I

Class 2 – Weight II

Class 3 – Weight III

### **Premium Schedule**

1<sup>st</sup> - \$18.00

2<sup>nd</sup> - \$15.00

3<sup>rd</sup> - \$13.00

4<sup>th</sup> - \$8.00

5<sup>th</sup> - \$3.00

Grand Champion - \$15.00 and Plaque

Reserve Champion - \$10.00 and Rosette

## **OPEN YOUTH DAIRY GOAT SHOW**

Entry Deadline: October 16, 2009

Entry Fee: None

Arrival Time: November 4, 2009, 5:00-6:00 p.m. for check in

Judging Begins: 6:00 p.m., November 4, 2009

(Shows are open to youth who reside in the Florida Panhandle, and southern Alabama Counties.)

### **5C-4.005 Goats or Sheep**

(1) OCVI Required.

(a) Florida-origin goats or sheep presented for exhibition must be accompanied by an OCVI dated not more than 90 days prior to presentation.

(b) Goats or sheep imported into Florida for exhibition must be accompanied by an OCVI completed within 30 days prior to exhibition.

(2) Identification. All goats or sheep entered for exhibition purposes must have an official individual identification in accordance with the National Scrapie Eradication Uniform Methods and Rules, APHIS 91-55-066, June 1, 2005.

(3) Test or Certification Required.

(a) Tuberculosis Test. All dairy goats six (6) months of age or older imported for exhibition purposes must originate from an Accredited Tuberculosis-Free Herd, or have had a negative caudal fold tuberculosis test within 90 days prior to exhibition. When originating from accredited tuberculosis-free herds, the OCVI must show, the accredited herd number and the date of the last herd accreditation test.

(b) Brucellosis Test. All dairy goats six (6) months of age or older imported for exhibition purposes must originate from a Certified Brucellosis-Free Herd, or have had a negative brucellosis test within 90 days prior to exhibition. When originating from a certified brucellosis-free herd, the OCVI must show the certified herd number and the date of the last herd certification test.

(c) Exemption From Test Requirements. There are no tuberculosis or brucellosis test requirements for meat type goats or Florida-origin dairy goats.

### **Dairy Goat Rules and Regulations:**

1. Youth exhibitors must have reached their 8<sup>th</sup> birthday by September 1 of the current year and not passed their 19<sup>th</sup> birthday or graduated from high school.
2. Goats must have been owned/leased and in possession of youth exhibitor for 60 days prior to the date of the show.
3. All animals must be dehorned or have horns tipped.
4. Exhibitors must be clean and neat and dressed in long pants or skirt with solid white dress shirt or blouse. Closed toe shoes are required.

### **Division A: Dairy Goat Showmanship Contest**

Class 1: Juniors 8-10 years

Class 2: Intermediates 11-13 years

Class 3: Seniors 14-18 years

### **Premium Schedule**

1<sup>st</sup> - \$18.00

2<sup>nd</sup> - \$15.00

3<sup>rd</sup> - \$13.00

4<sup>th</sup> - \$8.00

5<sup>th</sup> - \$3.00

Grand Showman – \$15.00 and Plaque

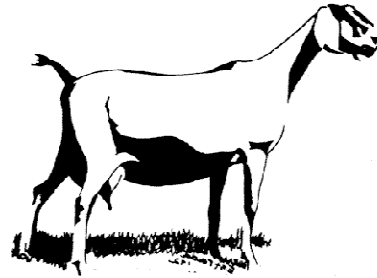
Reserve Showman - \$10.00 and Rosette

## **Division B: Youth Dairy Goat Show**

- Class 1 - Junior Doelings 6-12 months
- Class 2 - Junior Doelings 12-24 months
- Class 3 - Senior Milkers 2-3 years old
- Class 4 - Senior Milkers 4 years and over

## **Premium Schedule**

- 1<sup>st</sup> - \$18.00
- 2<sup>nd</sup> - \$15.00
- 3<sup>rd</sup> - \$13.00
- 4<sup>th</sup> - \$8.00
- 5<sup>th</sup> - \$3.00
- Grand Junior Doe - \$15.00 and Plaque
- Reserve Junior Doe - \$10.00 and Rosette
- Grand Senior Doe - \$15.00 and Plaque
- Reserve Senior Doe - \$10.00 and Rosette



## **4-H DOG SHOW AND COSTUME CONTEST**

Entry Deadline: October 16, 2009

Registration: 6:00 p.m., Thursday, November 5, 2009

Judging: Begins promptly at 6:30 p.m., November 5, 2009



- Exhibitors must be 4-H members.
- Dogs must be owned by 4-H'er or member of the immediate family.
- Pre-registration is required by October 16, 2009.
- No entry fee is required.
- Pure-bred and mixed breed dogs are welcomed as entries.
- Animals must be leashed at all times and no dogs may be left unattended.
- Each owner/handler must be able to control their dog.
- Each owner/handler is liable and responsible for his or her dog's behavior. Any dog misbehaving will be excluded from participation and may be required to leave the Fairgrounds.
- **Veterinarian proof of current shots is required at show check-in or copy sent with registration.**
- All dogs must be at least six (6) months of age.
- No female dogs in season will be allowed to compete.
- Each exhibitor is responsible for cleaning up after his or her dog. (Bring plastic bags or pooper scoop.)
- Exhibitors with dogs will be required to stay at area provided for the Dog Show ONLY. Dogs will not be allowed in the carnival area, in fair buildings, or near livestock or a petting zoo area.
- Participants can enter a maximum of five classes.
- Cloverbuds will show their dogs in a separate division. Junior, Intermediate and Senior entries will be judged as one division. Ribbons and premiums, will be given to the entries receiving First Place through Fourth Place in each category.
- Cloverbuds will receive a participation ribbon and \$5.00 premium in each category.

- There will be a Grand Champion and Reserve Champion Award given to two outstanding 4-H'ers and their dogs. (Based on overall performance and team work.) They will receive a rosette and premium.
- All decisions of the Judge(s) are final.

## **AGE REQUIREMENTS**

Clover buds – Must be at least 5 years old by September 1, 2009 and not have reached their 8th birthday by September 1, 2009.

Junior Division - Must be at least 8 years old by September 1, 2009 and not have reached their 11th birthday by September 1, 2009.

Intermediate Division – Must be at least 11 years old by September 1, 2009 and not have reached their 14<sup>th</sup> birthday by September 1, 2009

Senior Division - Must be at least 14 years old by September 1, 2009 and not have reached their 19th birthday by September 1, 2009 or graduated from high school.

## **PREMIUMS**

1st Place - \$5.00

2nd Place - \$4.00

3rd Place - \$3.00

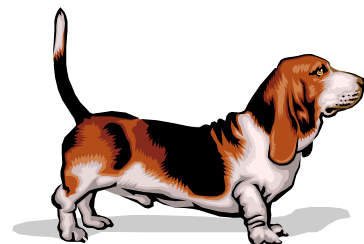
4th Place - \$2.00

Grand Champion Award – \$15.00 and rosette

Reserve Champion Award - \$10.00 and rosette

## **CATEGORIES**

1. Smallest Dog
2. Largest Dog
3. Best Rescued (Re-homed) Dog
4. Most Mysterious Heritage (Mixed Breeds Only)
5. Mirror Image (Dog & 4-H'er That Most Resemble Each Other)
6. Obedience Class (follows obedience commands – class may be divided into Basic Obedience and Advanced Obedience)
7. Showmanship (grooming, handling and knowledge of dogs)
8. Best Vocal Performance
9. Best Trick
10. Best Dressed (Dog and/or Dog and 4-H'er)



# OPEN YOUTH BREEDING BEEF SHOW



Entry Deadline: October 16, 2009

Arrival time: Saturday, November 7, 2009 at 1:00-2:00 p.m.

Judging begins: 2:00 p.m., November 7, 2009

## **Purpose**

1. To use the Breeding Beef Cattle Program as a tool in the total development and growth of youth in 4-H, FFA, and other youth groups.
2. To provide a learning experience in production agriculture.
3. To provide youth a means to provide themselves financial security for their future.
4. To provide opportunities for demonstrating skills learned in selecting, producing, breeding, fitting and showing cattle.

Cattle presented for exhibition in Florida must be accompanied by an Official Certificate of Veterinary Inspection dated not more than 90 days prior to presentation.

### Tuberculosis:

1. Cattle may be entered for exhibition without a tuberculin test provided the OCVI identifies the cattle as originating from a Tuberculosis-Free State, an Accredited Tuberculosis-Free Herd, or a herd not under quarantine in a Modified Accredited Tuberculosis State. When accredited, the herd accreditation number must be recorded on the OCVI.
2. Other cattle may be entered for exhibition provided the cattle originate from a herd not under quarantine and have a negative tuberculin test within 30 days prior to the date of the exhibition.
3. A positive test on any animal in a designated group, disqualifies all animals of the group from exhibition.

### Brucellosis:

1. Vaccination Required. All female dairy cattle four months of age or older born after January 1, 1984 must be officially calfhood vaccinated.
2. Test Required. Cattle from herds not under quarantine in Class A Areas must have evidence of a negative brucellosis test within 30 days prior to the date of exhibition.
3. Exemption from Required Test.
  - a. Steers and spayed heifers are exempt from the brucellosis test requirement.
  - b. Cattle identified on the OCVI as originating from a Certified Brucellosis-Free Herd, or a Class Free Area, are exempt from the brucellosis test requirement. When certified, the herd certification number must be recorded on the OCVI.
  - c. Cattle from non-quarantined herds originating from Class A Areas are exempt from brucellosis test requirements provided that the cattle are:
    1. Under 18 months of age; or
    2. Official calfhood vaccinates of beef breeds under 24 months of age; or
    3. Official calfhood vaccinates of dairy breeds under 20 months of age; and
    4. Not parturient or post parturient.

## **Rules and Regulations**

1. Cattle arriving at times other than stated above must have prior approval of the Event Coordinator.
2. Early registration would be advisable since space is limited. Entries will be accepted on a first-come, first-serve basis.
3. All animals must be broken to lead and in suitable condition for showing in order to compete for premiums.

4. The Northwest Florida Fair will not be responsible for damage done by animals or injuries to animals. (Read General Rules and Regulations for Livestock Exhibitors)
5. Youth exhibitors must have reached their 8<sup>th</sup> birthday by September 1 of the current year and not passed their 19<sup>th</sup> birthday or graduated from high school. Further, the exhibitor must reside in the Florida panhandle or south Alabama Counties.
6. Heifers exhibited must be between the ages of 6-24 months.
7. Cattle may be purebred or crossbred.
8. Cattle will be shown in classes based on age.
9. Exhibitors may enter up to three (3) animals.
10. Exhibitors must own or lease an animal a minimum of 60 days prior to show.

### **Showmanship**

- Class 1 – 8-10 years old
- Class 2 – 11-13 years old
- Class 3 – 14-18 years old

### **Youth Breeding Beef Show**

- Class 1 – Heifers age 6-12 months
- Class 2 – Heifers age 12-18 months
- Class 3 – Heifers age 18-24 months

### **Premiums**

1 <sup>st</sup> - \$20	5 <sup>th</sup> - \$12	Champion Heifer - \$30 and trophy
2 <sup>nd</sup> - \$18	6 <sup>th</sup> - \$10	Reserve Champion Heifer - \$20 and trophy
3 <sup>rd</sup> - \$16	7 <sup>th</sup> - \$5	Champion Showperson - \$30 and trophy
4 <sup>th</sup> - \$14	8 <sup>th</sup> - \$3	Reserve Champion Showperson - \$20 and trophy

## **OPEN MODEL HORSE SHOW**

Entry Deadline.....October 16, 2009  
 Arrival Time.....Saturday, November 7, 2009 – 3:00 p.m.  
 Judging Begins.....Saturday, November 7, 2009 – 3:30 p.m.

### **PURPOSE**

1. To use the Horse Program as a tool in the total development and growth of youth in 4-H, and other youth groups.
2. To provide a learning experience in showing.
3. To provide youth a means to provide themselves financial security for their futures.
4. To provide opportunities for demonstrating skills learned in selecting, fitting and showing model horses.

### **RULES AND REGULATIONS**

1. Youth exhibitors must have reached their 5<sup>th</sup> birthday by September 1 of the current year and not passed their 19<sup>th</sup> birthday or graduated from high school.
2. Exhibitors will be provided one half table of workspace.
3. Only one (1) horse per exhibitor can be entered into a class.
4. Each class will be given five (5) minutes to prepare models before judging begins.
5. Each entry must have the tag filled out correctly and attached to the model before judging begins. Information on the tag must include exhibitor name, model number, and class entered.
6. Tack and props do not have to be hand made.

## CLASS LIST:

### Performance

Western Performance  
English Performance  
Harness Performance

### Open Halter

### Costume

### Farm/Domestic Animal Freestyle



## PREMIUMS

Show premiums and ribbons will be awarded in Halter, Performance and Costume classes as follows:

1 <sup>st</sup> - \$5	3 <sup>rd</sup> - \$3
2 <sup>nd</sup> - \$4	4 <sup>th</sup> - \$2

## WHAT TO EXPECT AT A MODEL HORSE SHOW

### Preparing Models

Use the class list to make a list of your own that will remind you which model belongs in which class. Review show rules carefully. Only one horse per exhibitor can be entered in each class at this show. Classes are listed in the order they are scheduled. Since the Performance Classes are scheduled first, we suggest you tack up your performance horses at home and pack them carefully in your Model Horse Pockets or wrap them to keep the tack secure. When you arrive at the show, you'll need to adjust your tack, but you won't have to deal with trying to fasten tiny buckles when time is running short! If you choose to tack up your models at the show, be aware that you will be working under a deadline.

### Checking In

Allow plenty of time to get to the show site. When you arrive, sign in at the show registration table and ask where your table space is located. Before you set your models on your table, cover it with a tablecloth. The tablecloth will give you a safe surface on which to place your models, and it's also a good way to display your stable name or club name. Unpack your models and lay them on the tablecloth. Don't stand all of your models up in a row, an accidental bump could make them all fall.

### Showing

When the first class is called, take the model you entered in that class and place it on the **show ring table**, along with any props or information cards. Check your tack and props one last time; then turn each tag so that the model's name faces up and your name faces down. A show official will give a last call for entries; then will announce the class is closed and the judge will evaluate the models. Be sure to step away from the show ring table in order to give the judge room to work. The judge will place ribbons beside each model that he/she decided to place. Never try to talk to a judge during the judging, if you have questions, approach him/her between classes.